



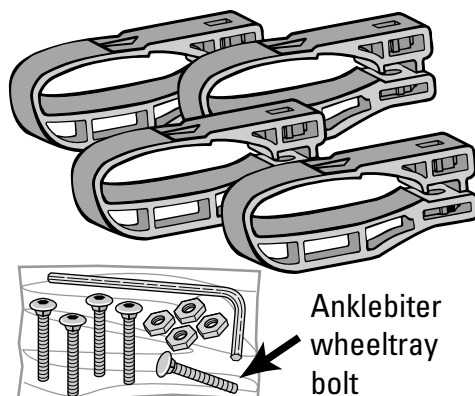
## GENUINE PARTS

# INSTALLATION INSTRUCTIONS

1. **DESCRIPTION:** MIGHTY MOUNT HORIZONTAL
2. **APPLICATION:** Refer to the Dealer Accessory Chart for specific vehicle application.
3. **PART NUMBER:** 999R1 EV004

4. **KIT CONTENTS:**

ITEM NO.	QTY	DESCRIPTION
1)	4	Horizontal Mighty Mount
2)	1	<a href="#">Instructions Replacement Template</a>
3)	4	Screws
4)	4	Nuts
5)	1	Wrench
6)	1	Anklebiter wheeltray bolt



5. **TOOLS REQUIRED:** NONE

6. **INSTALLATION PRECAUTIONS / NOTES:**

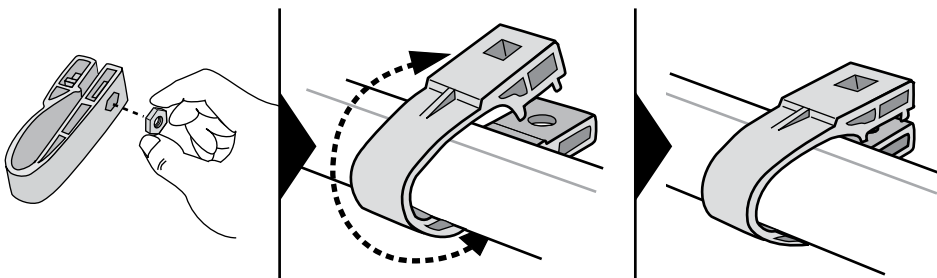
**⚠ WARNING**

- DO NOT exceed the recommended weight limits of your roof rack.
- Follow accessory instructions and use this reference sheet to attach your accessory to these Mighty Mounts.

**NOTE**

Mighty mounts wrap around factory installed racks. Follow accessory instructions and use this reference sheet to attach your accessory to these Mighty Mounts.

7. **INSTALLATION PROCEDURE**



- 1) Press the nuts firmly into each of the Mighty Mounts. (Bikes: Do not press the nuts into the Mighty Mount at rear of wheel tray.)
- 2) Pull Mighty Mounts apart and attach two onto each crossbar.